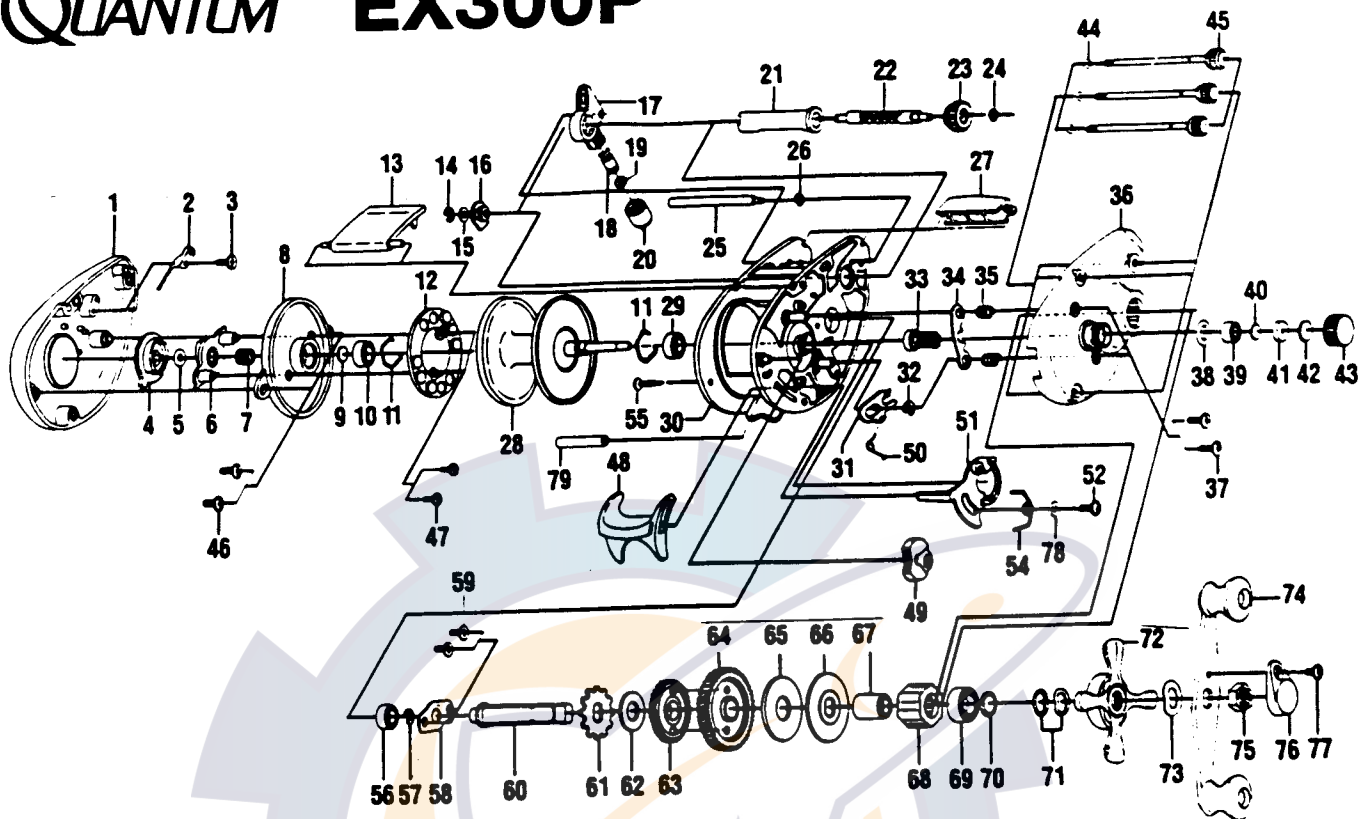


QUANTUM EX300P



| Key No. | Part No. | Description | Price | Key No. | Part No. | Description | Price |
|---------|----------|--------------------------|-------|---------|----------|-----------------------------|-------|
| 1 | QW023-05 | Left Side Cover | 8.70 | 40 | QW032-01 | Washer- Spool Tension | .52 |
| 2 | QW108-01 | Clicker | .93 | 41 | QW081-01 | Collar | .93 |
| 3 | QW125-01 | Screw - Clicker | .93 | 42 | QW082-01 | Cushion Washer - Spool | .93 |
| 4 | QW026-02 | Magnet Control Dial | 1.24 | 43 | QW033-01 | Spool Tension Knob | 2.83 |
| 5 | NX105-01 | Dial Friction Ring | .49 | 44 | QW073-01 | Ring - Thumb Screw Ret. | 1.13 |
| 6 | QW028-01 | Slide Cam | 1.13 | 45 | QW374-01 | Thumb Screw | 1.13 |
| 7 | NX071-01 | Slide Cam Spring | .36 | 46 | QW125-01 | Screw - Spool Cover | .93 |
| 8 | QW051-01 | Spool Cover | 2.68 | 47 | QW076-01 | Screw - Magnet Plate | .62 |
| 9 | QW032-01 | Spool Tension Shim | .52 | 48 | SW009-01 | Thumb Bar | 2.73 |
| 10 | SW017-01 | Bearing | 6.59 | 49 | SW087-01 | Flippin Switch | .93 |
| 11 | QW080-01 | Clip Ring | .52 | 50 | QW097-01 | Spring - Kick Lever | .62 |
| 12 | QW330-01 | Magnet Plate Assy | 5.51 | 51 | SW039-01 | Release Slider | 2.16 |
| 13 | QW027-02 | Hood | 5.46 | 52 | QW076-01 | Screw - Release Slider | .62 |
| 14 | NX092-01 | E-Clip (Worm Shaft) | .69 | 54 | SW104-01 | Spring - Release Slider | .62 |
| 15 | QW035-03 | Washer (Worm Shaft) | .62 | 55 | SW050-01 | Thumb Bar Retaining Screw | .93 |
| 16 | QW067-01 | Worm Shaft Bushing | .93 | 56 | QW017-01 | Bushing - Crankshaft | 6.59 |
| 17 | QW347-01 | Line Guide Carrier | 5.51 | 57 | QW120-01 | E-Ring Crankshaft | .31 |
| 18 | QW006-01 | Line Guide Pawl | 2.68 | 58 | QW002-01 | Retainer- Crankshaft | 1.13 |
| 19 | QW035-03 | Washer (L/G Pawl) | .62 | 59 | QW107-01 | Screw - Crankshaft Retainer | .93 |
| 20 | QW007-01 | Line Guide Carrier Screw | 2.16 | 60 | QW008-01 | Crankshaft | 5.41 |
| 21 | QW016-01 | Worm Shaft Guide | 1.91 | 61 | QW083-01 | Trip Ratchet | 1.70 |
| 22 | QW072-01 | Worm Shaft | 6.95 | 62 | QW111-01 | Washer - Ratchet | .62 |
| 23 | QW085-01 | Level Wind Gear | 1.70 | 63 | QW112-01 | Gear- L/W Idler | 1.49 |
| 24 | NX090-01 | E-Ring (L/W Gear) | .62 | 64 | XW012-01 | Drive Gear | 10.56 |
| 25 | QW061-01 | Stabilizer Bar | 2.58 | 65 | QW059-01 | Drag Disc | 2.94 |
| 26 | NX090-01 | E-Ring (Stabilizer Bar) | .62 | 66 | QW045-01 | Drag Washer | 1.24 |
| 27 | QW099-03 | Front Support | 3.24 | 67 | QW052-01 | Clutch Sleeve | 3.19 |
| 28 | QW321-01 | Spool Assy | 14.42 | 68 | QW063-01 | One Way Clutch | 10.56 |
| 29 | SW017-01 | Bearing | 6.59 | 69 | TW058-01 | Bearing - Crankshaft Top | 6.70 |
| 30 | SW001-01 | Frame | 8.45 | 70 | TW035-02 | Washer- Crankshaft | 1.49 |
| 31 | SW077-01 | Kick Lever | 1.49 | 71 | QW046-02 | Spring "D" Washer | .36 |
| 32 | QW120-01 | E-Ring (Kick Lever) | .31 | 72 | QW055-01 | Drag Star | 2.73 |
| 33 | XW311-01 | Pinion Gear | 9.79 | 73 | QW054-01 | Handle Washer | .36 |
| 34 | SW025-01 | Pinion Yoke | 2.11 | 74 | QW318-01 | Handle Assy | 8.57 |
| 35 | QW040-01 | Spring-Pinion Yoke | .93 | 75 | QW003-01 | Handle Nut | 1.60 |
| 36 | SW024-06 | Right Side Cover | 8.24 | 76 | QW034-01 | Handle Nut Cap | .93 |
| 37 | QW053-01 | Screw (Rt. Side Cover) | .93 | 77 | QW123-01 | Handle Nut Cap Screw | .93 |
| 38 | QW101-01 | Tension Knob Ring | .36 | 78 | SW121-01 | Washer- Release Slider | .62 |
| 39 | QW117-01 | Bushing-Tension Knob | 8.45 | 79 | SW094-01 | Spacer | .46 |

Prices subject to change without notice. Prices do not include postage and handling.

PLEASE ORDER BY PART NUMBER

Rev. 6/95

Zebco Division Brunswick Corporation, Box 270, Tulsa, OK 74101 USA 918-836-5581

